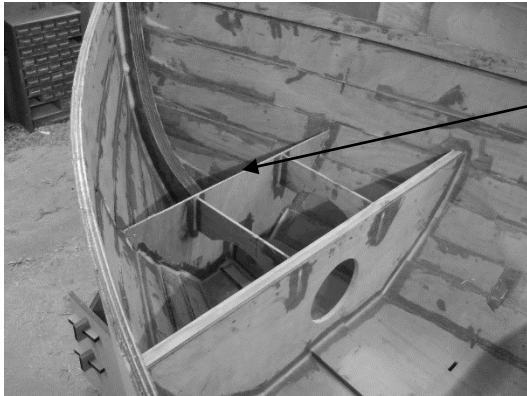


Draw a pencil line between the horizontal slots. Insert a saw in one of the slots and saw along the line. The saw cut should be level with the bottom of the slots.



Cut away Bulkhead.

Note: The top of bulkhead B1 & B2 will support the forward seat.

Remove the screws securing the boat/bottom plank to the assembly platform.

#### Step 12 – Fibre glassing Plank P1 to Bottom Plank

The join between the bottom plank and Plank P1 is currently a butt joint with little strength. This step involves strengthening the joint by applying 2 layers of 200g/sq. m fibreglass tape, the first layer 50mm wide and the second 75mm wide. It is important to do a neat job in order that the tape doesn't show too much once the boat is complete. To get some practice, I suggest you apply tape in the spaces between the 3 seats first, then when you move on to the 2 areas in sight you will be confident of doing a neat job.

Before applying the glass tape, sandpaper the areas either side of the joint to remove any globs of glue and to abrade the filleted areas. Sanding should remove the shine/gloss appearance from previously applied epoxy. It is important to fill any holes or recesses with thickened epoxy, otherwise you will end up with voids (trapped air) beneath the glass tape, and this would result in a weakened joint.



Step A – apply epoxy either side of the joint and on the bulkhead at each end by a distance equal to the width of the tape.