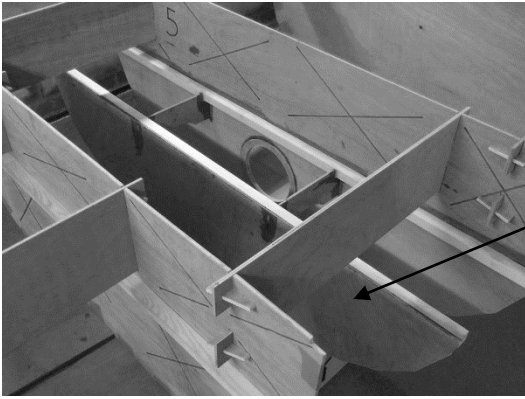
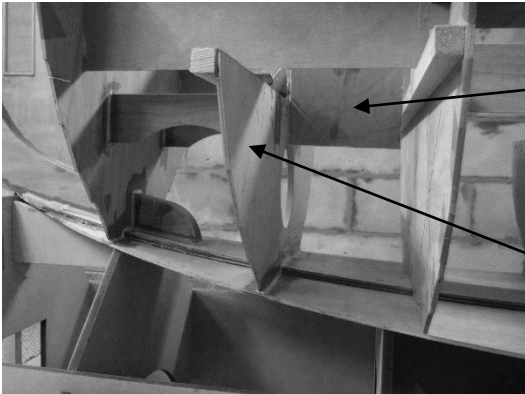


B4



B4 fitted with spacers S2

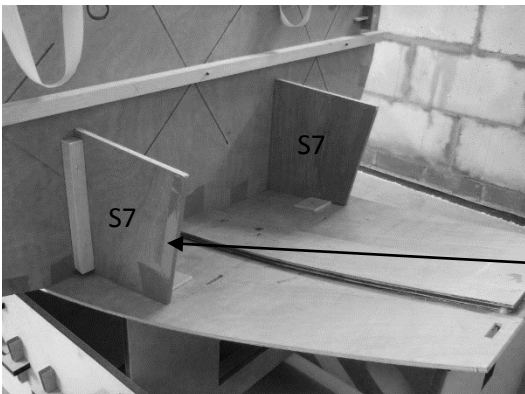
B2



Scrap timber used to add gentle sideways pressure, just enough to hold B2 against spacers.

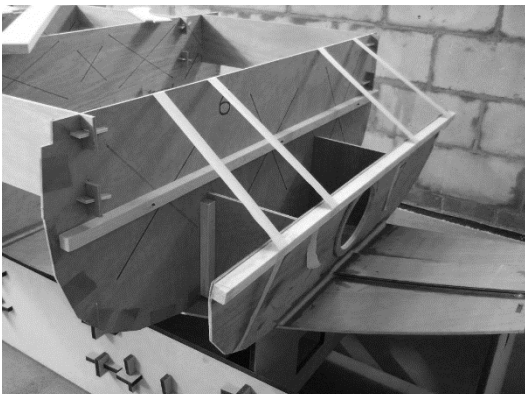
B2 fitted with spacers S1. Use a spirit level to ensure B2 is vertical. Fitting this bulkhead is a careful balancing act; a dry-run is essential before gluing.

B7



Screw a short length of batten to the forward edge of spacers S7, then screw from the forward side of B6 into the battens to hold them tight against B6.

Locate the spacers about 50mm (2") from the outside edges of the bottom plank
Apply masking tape to the edges of S7 to prevent them sticking to the bottom plank or B7. Note that S7 will be removed later in the build process.



Glue bulkhead B7 in place. Use masking tape to hold it against the spacers while the glue cures.

The spacers S7 are only there to hold bulkhead B7 at the correct angle.