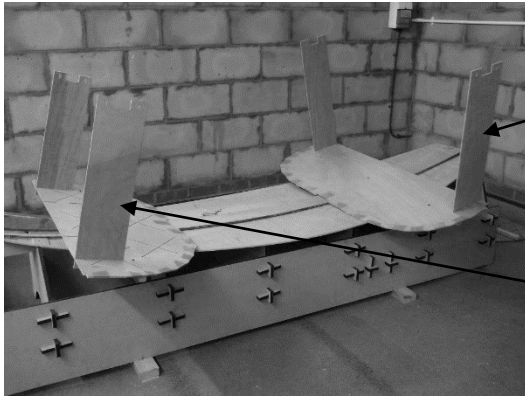
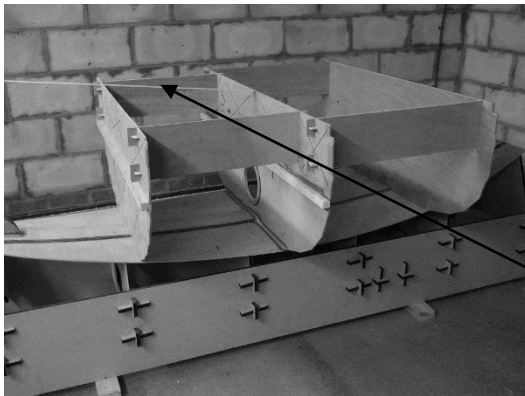


### Step 7 - Bulkhead Fitting B3, B5, B6



Place spacers S6 on bulkhead 6 and lock in place with tapered wedges, finger tight is sufficient.

Place spacers S5 on bulkhead 3.



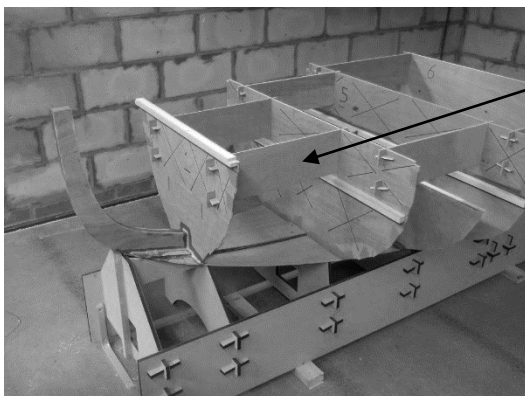
Glue bulkhead 5 in position ensuring all glued edges are thoroughly coated with epoxy, at the same time locate bulkheads 3 & 6 and secure spacer pieces with wedges to bulkhead 5. Place wedges on the underside to pull B3 & B6 tight against the bottom plank, again finger tight. Run a fillet of thickened epoxy either side of B5 between the bulkhead and the bottom plank. Do not glue B3 & B6.

Use a spirit level to check B5 is vertical. In the photo you will see a piece of masking tape being used to pull the top of B5 gently towards the stem to hold it vertical.

### Step 8 - Bulkhead Fitting B1, B4, B2, B7, Transom

Remove the two plywood backing pads and screws holding the forward part of the bottom plank to platform piece no 2 as they are likely to obstruct the fitting of bulkhead 1. With these removed the bottom plank is still held securely in place by the two forward most screws.

B1



Fit spacer pieces S4 to bulkhead 3 and lock in place with wedges.

Glue bulkhead 1 in place on the bottom plank, using wedges to lock in place against S4. Be sure to add glue fillets around all glued joints.